

CERTIFIED LAND CORNER RECORDATION

DESCRIPTION OF CORNER EVIDENCE FOUND, AND ORIGINAL RECORD (If known)

MARKED STONE SW CORNER SECTION 18,  
T 13 N., R. 60 W., 6<sup>TH</sup> P.M.,  
LARAMIE COUNTY, WYOMING

'87 JUN 9 PM 2 17

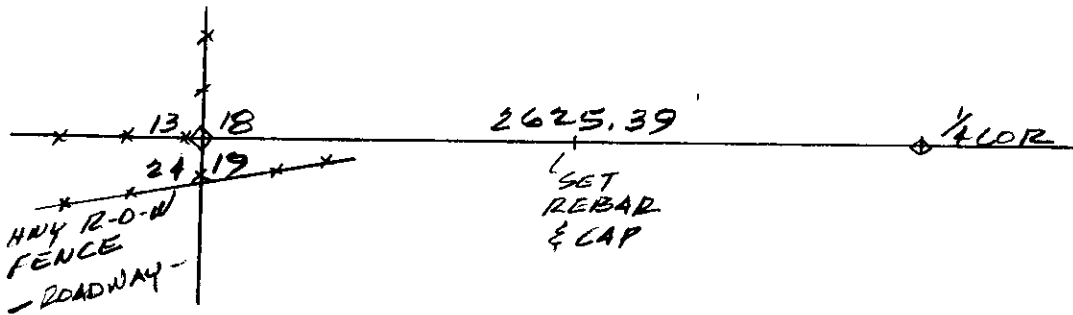
LARAMIE COUNTY  
CLERK  
CHEYENNE, WY.

029755

DESCRIPTION OF MONUMENT AND ACCESSORIES ESTABLISHED  
TO PERPETUATE THE ORIGINAL LOCATION OF THIS CORNER:

MARKED STONE  
SET POINT 1312.70 FEET EAST

SKETCH, WITH COURSE AND DISTANCE TO ADJACENT CORNER IF DETERMINED IN THIS SURVEY.  
(May Sketch or Paste Reproduction on Reverse Side.)



I, Donald M. Hopkins certify that I have carefully performed the work done on the diagrammed corner as reported on this recordation form and approve the same.

Donald M. Hopkins 558  
Signature of Surveyor Registration No.

STATE OF WYOMING,  
Office of Clerk and Recorder,  
County of Laramie

This "corner record" was filed for record on the 9<sup>th</sup> day of June, 1987, was noted on the cross-index plat and is assigned page No. \_\_\_\_\_, in book No. \_\_\_\_\_

Janet C. Whitehead  
County Official  
Cross Index No. N-1 T. B R. 68 Mer.  
\_\_\_\_ T. \_\_\_\_\_ R. \_\_\_\_\_ Mer.  
\_\_\_\_ T. \_\_\_\_\_ R. \_\_\_\_\_ Mer.  
\_\_\_\_ T. \_\_\_\_\_ R. \_\_\_\_\_ Mer.  
\_\_\_\_ T. \_\_\_\_\_ R. \_\_\_\_\_ Mer.  
\_\_\_\_ T. \_\_\_\_\_ R. \_\_\_\_\_ Mer.  
\_\_\_\_ T. \_\_\_\_\_ R. \_\_\_\_\_ Mer.